

Pull Device StreetJet



03/2024

ORDER FORM

Errors and omissions excepted.

Billing Address Or Customer-ID			Shipping Address	Identical To Billing Address
C.-ID:			C.-ID:	
Name:			Name:	
Street:			Street:	
Town/PC:			Town/PC:	
E-Mail:			E-Mail:	
Phone:			Phone:	
Order Information			User Weight	
Order	Calculation	Built-4-Me®	Max. user weight: 120 kg	
Purchase Order No.:			User Weight:	kg
Art. No.: 47800001		Reimbursement Code: xxx		
Order Date:	Day	Month	Year	

Base Price

£3,995

Technical Data Overview

Max. user weight	120 kg	Max. speed forward	6 kph; optional 10 kph, 15 kph or 20 kph
Front frame width	220 – 425 mm ⁽¹⁾	Wheel size	12" pneumatic hybrid tyre / 16" pneumatic hybrid tyre
Device IP Rating	IPX4	Motor power (max. power)	12" 250 W (630 W) / 16" 250 W (750 W)
Battery weight	2,6 kg (14 Ah) / 2,1 kg (8 Ah) ⁽⁴⁾	Battery type	Li-Ion, 36V, 14 Ah (8 Ah flight battery optional) ⁽⁴⁾ , intelligent battery management system
Total weight w/o battery	from 12,9 kg ⁽³⁾	Brake type	Twin-brake, system: mechanical disc-brake and separate proportional electric brake Optional Triple-brake, system: dual mechanical brake, and separate electric brake
Total weight with battery	from 15 kg ⁽³⁾	Operating Voltage	36 Volt
Charger	36V, 2A (4A quick charger optional)	Climbing power	up to 11% (6°)
Range of action	up to 50km (with 14 Ah battery) / up to 26km (with 8 Ah battery) ⁽²⁾		

(1) Measured inside tube to inside tube.

Use only the measured dimension and not the seat width to check compatibility.

(2) According to ISO 7176 - 4, depending on the ground surface, the weight of the user, driving behaviour, temperature and terrain.

(3) Depending on product configuration.

(4) 8 Ah battery available from Summer 2024

Base		£
STE070092	12 Inch wheel, pneumatic hybrid tyre, 250W/630W	3,995
STE070093	16 Inch wheel, pneumatic hybrid tyre, 250W/750W	3,995
Ordering/Bundling		£
STE090213	Without wheelchair order	–
STE090217	With wheelchair order, not mounted to the wheelchair ⁽¹⁾	–
Docking / One-Touch-Docking-Clamps		£
One-Touch-Docking-Clamps		
STE010053	One Touch Docking Clamps for round tube frames, adjustable diameter 19mm-24mm ⁽²⁾⁽³⁾	0
STE010054	One Touch Docking Clamps for round tube frames, adjustable diameter 25mm-35mm ⁽²⁾⁽³⁾	0
STE010059	One Touch Docking Clamps for oval tubes (Quickie Helium, Quickie Nitrum, Quickie Xenon ² FF) ⁽²⁾	0
Adjustability		£
Front Frame width (measured inside to inside tube) ⁽⁴⁾		
STE000160	220mm - 275mm	0
STE000161	275mm - 330mm	0
STE000162	330mm - 425mm	0
Quad controls		£
The Quad control option replaces standard throttle & brake lever		
STE000099	Quad controls, incl. throttle and brake	400
Throttle		£
Throttle lever		
STE000082	Right hand mount (Proportional electrical brake on opposite side)	0
STE000083	Left hand mount (Proportional electrical brake on opposite side)	0
Handlebar		£
STE000163	Narrow 480mm ⁽⁷⁾	0
STE000164	Wide 540mm	0
Brake		£
	Proportional electrical brake (on opposite side to the throttle lever)	0
	Mechanical disc brake Shimano, incl. parking brake function	0
STE060026	Brake lever right hand mount	0
STE060027	Brake lever left hand mount	0
STE060025	Mechanical double disc brake ⁽⁷⁾	230
Speed Setting		£
STE000025	Speed, max. 6 kp/h	0
STE000027	Speed, max. 10 kp/h ⁽⁵⁾	0
STE000028	Speed, max. 15 kp/h ⁽⁵⁾	0
STE000167	Speed, max. 20 kp/h ⁽⁵⁾	0
Display		£
	Display: Acceleration Setting, Speedometer, Average Speed, Maximum Speed, Trip Time, Trip Distance, Total Kilometers, State of Charge, Power Consumption	0

(1) Wheelchair order on separate order form. Separate shipment of wheelchair and StreetJet.

(2) Always check installation space for the docking clamps before ordering. Depending on configuration and option, a particular configuration of a chair might not offer enough space.

(3) Always check combination agreements for non-Sunrise wheelchairs.

(4) Frame width measured from inside frame tube to inside frame tube at the mounting position. Use only the measured dimension and not the seat width to check compatibility.

(5) Check your local laws and regulations for max. permitted speed in your country. Speed-settings > 6 km/h can only be ordered via Fax with a signed waiver (next page). Max. speed-settings can only be altered by Sunrise Medical.

(6) Always check in advance with your airline carrier for specific battery requirements.

(7) Not available with STE000099 quad controls

Battery Charger

£

STE110205	Charger 2A (14 Ah full charging time approximately 7-8 hours)	0
STE110206	Quick charger 4A (14 Ah full charging time approximately 3.5 hours)	160

Colours

£

Frame Colour (Fork and main frame)

RGK100200	Black matt 105	0
RGK100171	White matt 101	0
RGK100202	Grey matt 131	0
RGK100203	Light grey matt 133	0
RGK100204	Navy blue matt 152	0
RGK100151	Black gloss 103	0
RGK100172	White gloss 100	0
RGK100152	Grey gloss 132	0
RGK100170	Cream gloss 135	0
RGK100166	Red gloss 108	0
RGK100169	Yellow gloss 120	0
RGK100163	Forest green gloss 143	0
RGK100161	Green gloss 107	0
RGK100159	Dark blue gloss 151	0
RGK100158	Royal blue gloss 154	0
RGK100156	Blue gloss 174	0
RGK100160	Duckegg blue gloss 141	0
RGK100168	Pink gloss 188	0
RGK100167	Orange gloss 180	0
RGK100157	Purple gloss 157	0

Color Kit anodized (stand, central section, One-Touch-Clamps)

STE100146	Anodized, black	0
STE100147	Anodized, red	0
STE100148	Anodized, blue	0
STE100149	Anodized, purple	0
STE100173	Anodized, gold	0

Cable colour (brake cable, docking release cable)

STE060028	Cables, black	0
STE060029	Cables, blue	0
STE060030	Cables, red	0

Accessories		€
	LED light	0
	Carbon fender	0
	Stand, with wheels	0
STE090220	Additional Battery, Lithium-ion, 14 Ah - 36V	550
STE090209	Additional Battery, Lithium-ion, 8 Ah - 36V (288 Wh flight battery) ⁽³⁾⁽⁴⁾	550
STE090189	Luggage rack (in frame colour)	140
	Front Frame Protector round tube (only in combination with STE010054 One Touch Docking Clamps for round tube frames, adjustable diameter 25mm-35mm) ⁽¹⁾⁽²⁾	200
STE090190	Frame protector, round tube 19mm	165
STE090191	Frame protector, round tube 25mm	165
STE090192	Frame protector, round tube 30mm	165
STE090194	Frame protector, round tube 32mm	165
STE090195	Frame protector, oval tube (Nitrum, Helium, Xenon) (only in combination with STE010059 One Touch Docking Clamps for oval tubes (Quickie Helium, Quickie Nitrum, Quickie Xenon? FF) ⁽¹⁾⁽²⁾	200
STE110155	Additional charger (2A)	130
STE090219	Additional quick charger (4A)	160

(1) Always check combination agreements for non-Sunrise wheelchairs.

(2) Frame width measured from inside frame tube to inside frame tube at the mounting position. Use only the measured dimension and not the seat width to check compatibility.

(3) Always check in advance with your airline carrier for specific battery requirements.

(4) 8 Ah battery available from Summer 2024

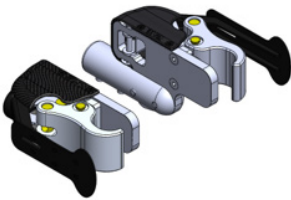
Empulse StreetJet



// STE070092 12 Inch wheel, pneumatic hybrid tyre, 250W/630W

// STE070093 16 Inch wheel, pneumatic hybrid tyre, 250W/750W

Docking-clamps



// STE010059 One Touch Docking Clamps for oval tubes (Quickie Helium, Quickie Nitrum, Quickie Xenon² FF) ⁽²⁾

Accessories



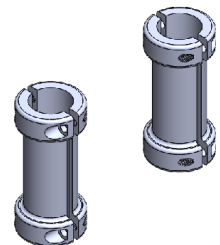
LED light, Carbon fender, discbrake



Stand, with wheels



// STE090189 Luggage rack (in frame colour)



Front Frame Protector (example STE090192). Frame protector, (round tube 30mm)

Brake



// STE060025 Mechanical double disc brake

Quad controls



// STE000099 Quad controls, incl. throttle and brake

Colours**Frame Colour (Fork and main frame)****Color Kit anodized (stand, central section, One-Touch-Clamps)****Cable colour (brake cable, docking release cable)**

Letter of Acknowledgement

We herewith advise, that using the StreetJet with max. speed-settings higher than 6 kph is only permitted on public roads in certain countries and otherwise may only be used on private property.

In the absence of approval, in accordance with the road traffic laws, the StreetJet with speed-settings > 6 kph may not be driven on public roads, bicycle-lanes and pavements. You need to inform yourself about the country specific legislation regarding usage and your legal obligation to insure the StreetJet speed settings higher than 6 kph (10/15/20 kph). When you´re travelling with your StreetJet, always check the specific legislation in the respective country.

When placing an order for a max. speed-setting > 6 kph, please confirm with your signature below, that you have understood the above information and that you only intend the usage of your StreetJet on private property.

I herewith confirm, that I am aware of the information above, that I will follow strictly the country specific legislation.

Date**Customer Signature**

Day Month Year

Comments

--

StreetJet

€

Base Price	00,000.00
Total Of Additional Equipment	
Packaging And Transport	
Exclusive VAT	
VAT	
Total Price	

Date

Signature

Day Month Year

**Sunrise Medical GmbH**

Kahlbachring 2-4

D-69254 Malsch/HD

Phone: +49 (0) 72 53 / 9 80-0

Fax: +49 (0) 72 53 / 9 80-222

E-Mail: kundenservice@sunrisemedical.de

www.SunriseMedical.eu