

FIG. 3 Joystick controller unit

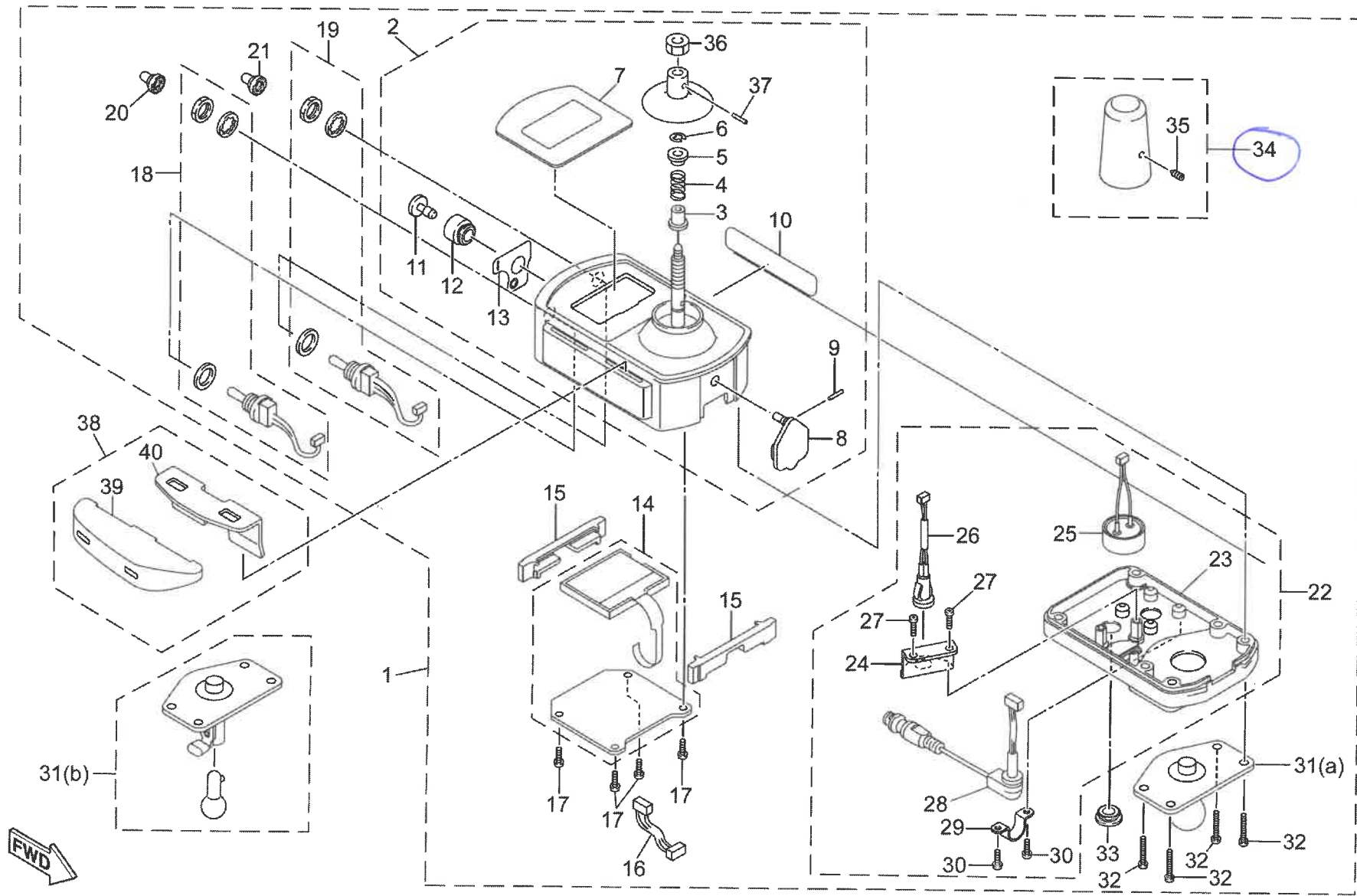


FIG. 3 Joystick controller unit

No.	Part Number	Part Name	Qty.	Detail
1	X0F-48110-A3	REMOTE CONTROLLER ASSEMBLY	1	Joystick unit with fixed type bracket 1 (No.32 (a))
	X0F-48110-B3			Joystick unit with detachable type bracket 1 (No.32 (b))
2	X0F-482A0-A2	• JOYSTICK CONTROLLER ASSEMBLY	1	
3	X0F-48243-00	•• BUSH 3	1	
4	X0F-48141-00	•• SPRING, CONTROLLER LEVER	1	Joystick operation force controlling spring. See service manual.
5	X0F-48263-00	•• BUSH 4	1	
6	99009-06400	•• CIRCLIP	1	Not reusable
7	X0F-4811A-A0	•• LABEL 1	1	Transparent plastic cover. Anti-tarnish applied. Don't touch back surface.
8	X0F-82375-01	•• COVER, PLUG CAP	1	Rubber USB jack cover
9	93602-13177	•• PIN, DOWEL	1	To secure USB jack cover
10	X0C-2118K-A2	•• LABEL, CAUTION	2	See owner's manual' label, Affixed on both left/right surface.
11	X0F-8396K-00	•• BUTTON	1	Horn button
12	X0F-83634-00	•• GROMMET	1	Horn button holding grommet
13	X0F-4811B-01	•• LABEL 2	1	
14	X0F-8721A-A0	• CONT.BOX ASSY.	1	Including LCD and Circuit board
15	X0F-8358W-00	• HOLDER, DISPLAY	2	Rubber display holder
16	X0F-8332N-00	• WIRE 2, LEAD	1	Connecting cable
17	97707-30508	• SCREW	4	To secure circuit board
18	X0F-82508-00	• MAIN SWITCH ASSEMBLY	1	Power switch with rubber grommet, rosette washer and nut. Nut tightening torque: 1.4-1.6Nm
19	X0F-86288-00	• SELECT SWITCH 1	1	Speed control switch with rubber grommet, rosette washer and nut. Nut tightening torque: 1.4-1.6Nm
20	X0C-83956-00	• CAP 1	1	Yellow switch cover
21	X0C-83957-00	• CAP 2	1	Black switch cover
22	X0F-8398E-A0	• SWITCH CASE ASSEMBLY, UNDER	1	
23	X0F-83987-00	•• CASE, UNDER SWITCH	1	Plastic bottom case
24	X0F-8396C-00	•• PLATE, GUIDE	1	Metal bracket to secure horn and connector
25	X0F-83370-00	•• HORN ASSEMBLY	1	Horn
26	X0F-85598-00	•• CONNECTOR, WIRE	1	Smart Tune wire jack
27	97707-30508	•• SCREW	2	To secure guide plate. Tightening torque: 0.4-0.6Nm
28	X0F-88146-01	•• CABLE	1	
29	X0F-83599-00	•• GUIDE, WIRE	1	
30	97707-30508	•• SCREW	2	To secure wire guide. Tightening torque: 0.4-0.6Nm
31	X0F-83955-00	• BRACKET 1	1	(a) Fixed type bracket
	X0F-48530-A0			(b) Detachable type bracket
32	97707-40525	• SCREW, PAN HEAD TAPPING	6	To secure bottom case and bracket. Tightening torque: 1.1-1.4Nm
33	X0C-17481-00	• PLUG, BLIND	1	Rubber plug to cover Smart Tune jack
34	X0F-481C0-01	• KNOB ASSEMBLY	1	Joystick knob assembly
35	92A08-03108	•• SET SCREW	1	To secure knob. Tightening torque: 0.1-0.3Nm
36	95380-06700	Nut	1	For new black shaft
37	93602-13177	• PIN, DOWEL	1	Thin pin for old silver shaft
	93603-16219			Thick pin for new black shaft
38	X0F-481D0-10	PLATE ASSEMBLY	1	Palm rest plate assembly
39	X0F-48143-00	• PLATE 1, STOPPER	1	Plastic part
40	X0F-48144-00	• PLATE 2, STOPPER	1	Metal plate

FIG. 22 Option Parts

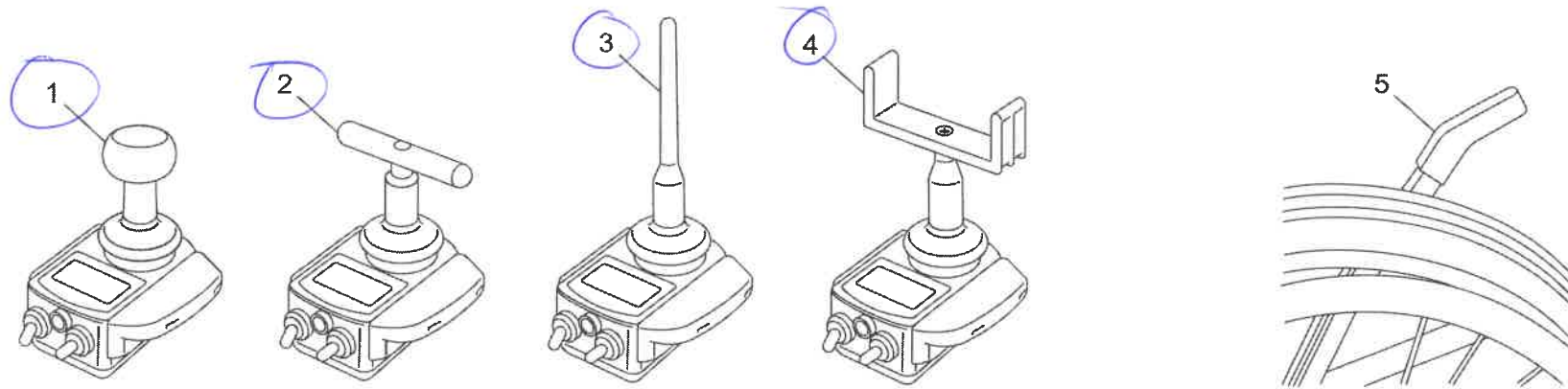


FIG. 22 Option Parts

No.	Part Number	Part Name	Qty.	Detail
1	X0F-481C0-L0	Round type	1	
2	X0F-481C0-N0	T-shape type	1	
3	X0F-481C0-M0	Stick type	1	
4	X0F-481C0-P0	U-shape type	1	
5	XA2-46381-11	Long clutch lever	1	