

# Flo-tech<sup>®</sup> Cushion Guide



Cushions shaped around people

High quality cushions that are proven to promote good posture and reduce pressure whilst counteracting the effects of shear and friction

To view our up-to-date cushion size chart, please visit [www.invacare.co.uk](http://www.invacare.co.uk)

## Flo-tech Lite



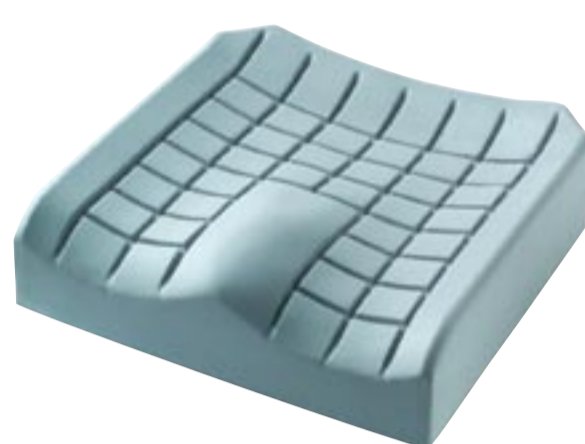
Moulded contoured cushion to provide stability, aid a good pelvic position and thigh alignment. Ideal for part time users. The Lite is also suitable for use with Paediatrics.

Weight Limit: 20 Stone (127 kg)

Risk Category: Comfort / Low Risk

Waterlow: Up to 10\*

## Flo-tech Contour



Deeper profile than the Flo-Tech Lite, therefore more suitable for bony, tall, or heavier users.

Weight Limit: 30 Stone (191 kg)

Risk Category: At Risk / Increased Vulnerability

Waterlow: Up to 15\*

## Flo-tech Plus



Moulded contoured cushion to provide stability and aid a good pelvic position and thigh alignment. Includes a large gel sac to accommodate the ischial tuberosities. Suitable for clients who have very limited mobility that are at risk of pressure sores, e.g. Stroke. Especially suitable for bony, tall or heavier users.

Weight Limit: 30 Stone (191 kg)

Risk Category: High Risk / Elevated Risk

Waterlow: Up to 20\*

## Flo-tech Image



Slim moulded contoured cushion with the postural benefits of the Lite. Has the added benefit of a large gel sac which gives a high level of protection to the ischial tuberosities and sacrum. Good for active users wanting a high level of protection but who wish to have a lighter weight alternative to the Solution, e.g. Spinal Cord Injury.

Weight Limit: 22 Stone (140 kg)

Risk Category: High Risk / Elevated Risk

Waterlow: Up to 20\*

## Flo-tech Solution/ Deep Solution



Slim moulded contoured cushion with the postural benefits of the Lite plus additional large gel sac over the complete top surface of the cushion for maximum protection. It is ideal for users with severely limited mobility who require some contouring to promote good posture with excellent pressure redistribution e.g. Multiple Sclerosis, Spinal Cord Injury, Stroke etc.

**Deep Solution** - Deeper profile than the solution, therefore offering additional postural support. Suitable for users with pronounced bony prominences or at risk of bottoming out.

Weight Limit: 22 Stone (140 kg)

Risk Category: Very high risk / Elevated Risk

Waterlow: 20 plus\*

## Flo-tech Solution Xtra



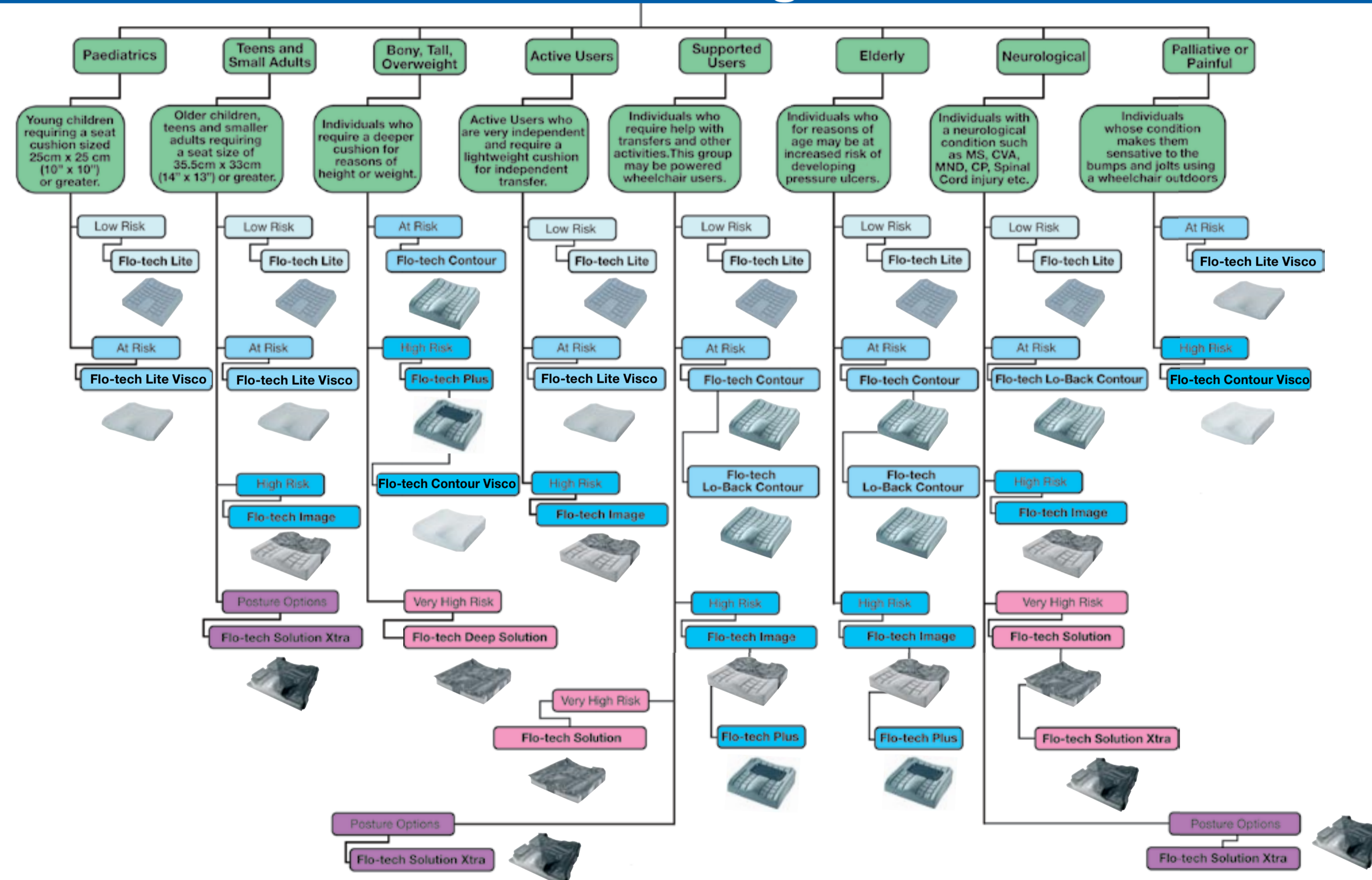
Modular system allowing bespoke modification of the cushion to support or correct a wide variety of postural problems such as Multiple Sclerosis, Spinal Cord Injury, Stroke, Brain Injury, Cerebral Palsy etc.

Weight Limit: 22 Stone (140 kg)

Risk Category: Very high risk / Elevated Risk

Waterlow: 20 plus\*

## Flo-tech Cushion Segmentation



## Flo-tech Lite Visco



Moulded contoured Visco elastic foam cushion for improved comfort. Ideal for use with paediatrics.

Weight Limit:

3-5 Stone

19-32 kg

Soft

Risk Category: At Risk / Increased Vulnerability

Waterlow: Up to 15\*

5-8 Stone

32-51 kg

Medium

8-11 Stone

51-70 kg

Firm

Waterlow: Up to 15\*

## Flo-tech Contour Visco



Moulded contoured Visco elastic foam cushion for maximum comfort and improved pressure redistribution. Promotes some thigh alignment. Very useful for wheelchair users who suffer with pain e.g. Back pain, who appreciate the shock-absorbing properties of Visco-elastic foam.

Weight Limit:

4-8 Stone

25-51 kg

Soft

Risk Category: High Risk/ Elevated Risk

Waterlow: Up to 20\*

8-12 Stone

51-76 kg

Medium

12-16 Stone

76-102 kg

Firm

16-20 Stone

102-125 kg

Very Firm

## Comfort Range - Wheelchair Seating

### Essential / Essential Low Profile



Manufactured from highly resilient foam, the Essential is a cost effective wheelchair comfort cushion.

Weight Limit:

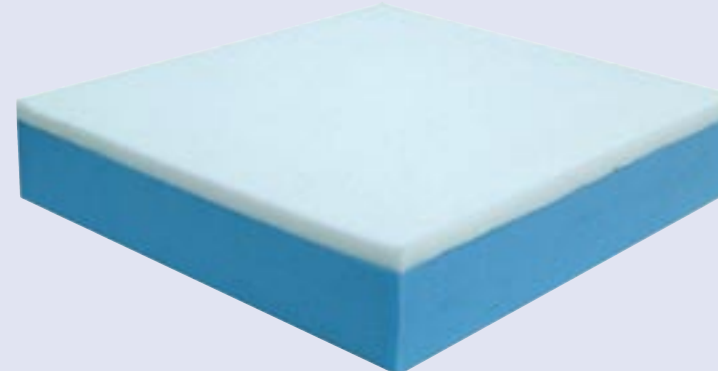
Essential Basic (3") - 17 stone (108 kg)

Essential Low Profile (2") - 12 stone (76 kg)

Risk Category: Comfort

Waterlow: N/A

### Essential Visco



Dual layered comfort, using a combination of high density, temperature sensitive, visco-elastic foam in conjunction with a highly resilient foam base to provide added support and longevity.

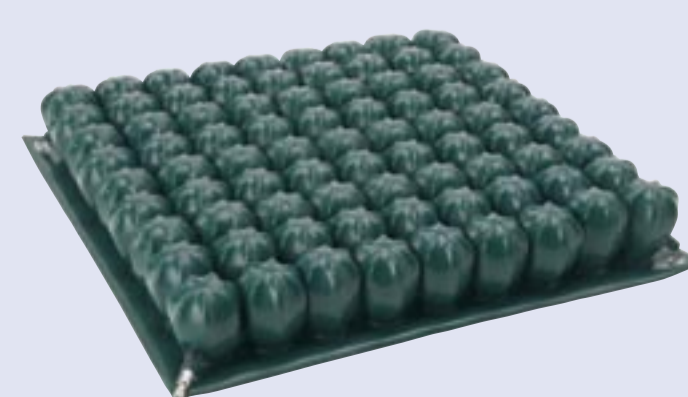
Weight Limit: 17 stone (108 kg)

Risk Category: Comfort

Waterlow: N/A

## New Cushion for 2009

### Aero-tech Uno



The *Invacare*® **Aero-tech** Uno addresses critical pressure points providing the client with a high level of skin protection. In addition, the continual movement of air provides protection for the ischial tuberosities and coccyx area. This air fluidised movement minimises changes in peak pressures, therefore providing excellent protection against pressure damage.



### Individual Cell Supresion

Cover plates in a range of sizes can be used to suppress cells.

Weight Limit: 24 stone (150 kg)

Risk Category: Very High Risk

Waterlow: 20 plus\*